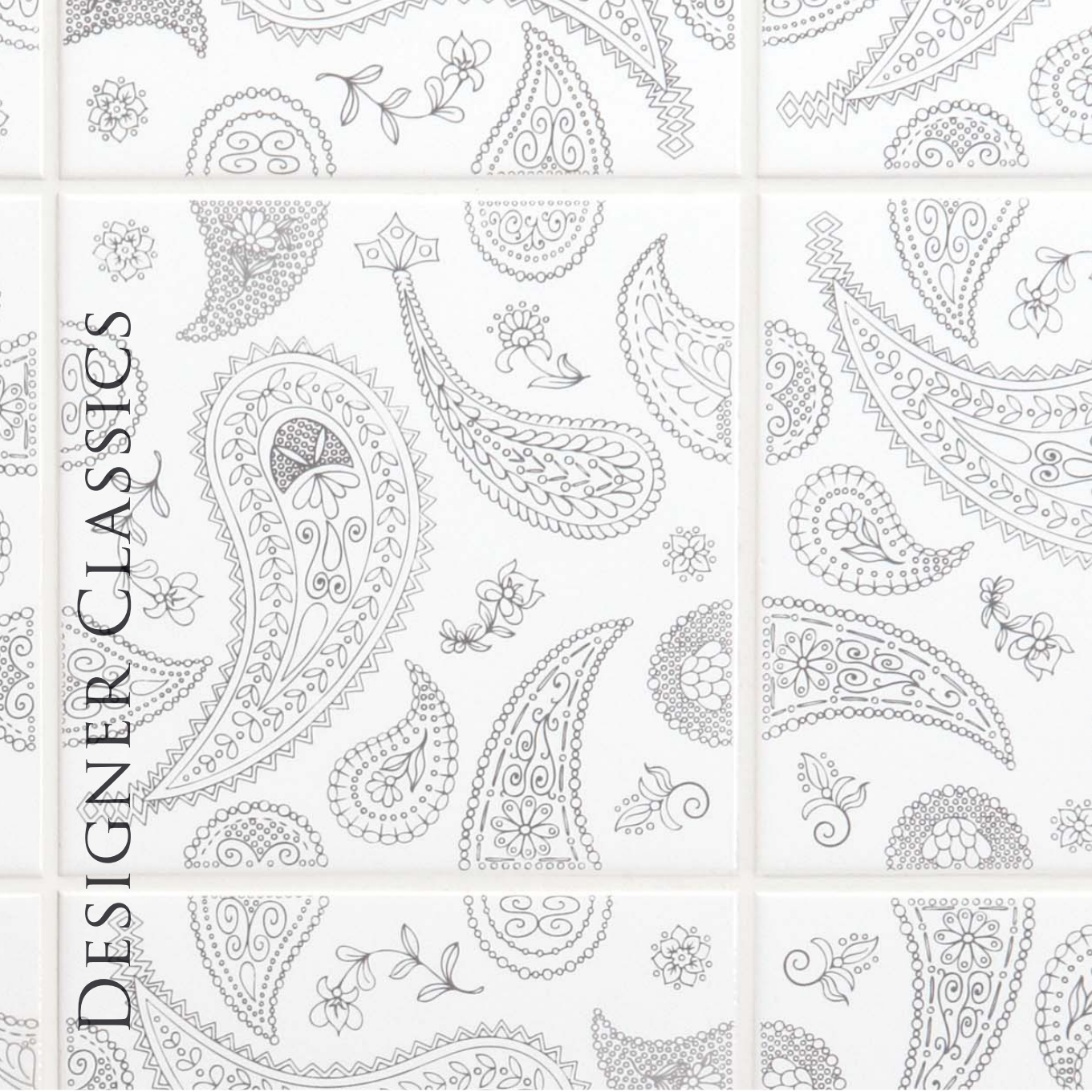


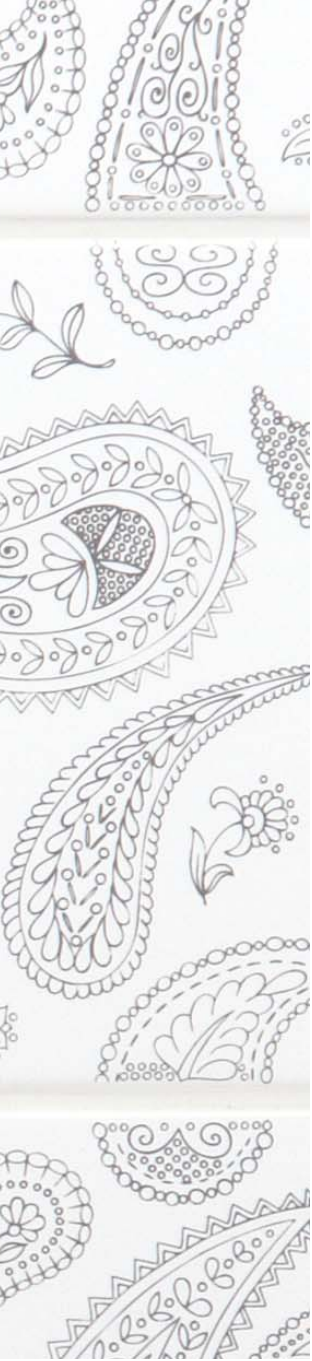
©
ORIGINALSTYLE



DESIGNER CLASSICS

DESIGNER CLASSICS





New developments in glaze technology means we can now produce a spectrum of colours, from the subtlest satin tones to the latest catwalk colours – including the most vibrant pillar box red and deepest black.

Designer Classics is an eclectic range of colours and designs suitable for every mood and any residential or commercial interior. The colours range from black on brilliant white, mellow cream, dramatic red and midnight black; textures include embossed, gloss, lustre and satin. With the choice of designs encompassing embossed damask patterns to stylised flower forms, classic stripes to traditional paisley, the combinations are endless. These are classics in the making.



BRILLIANT WHITE



A9511 Peony Black on Brilliant White

Brilliant White is always popular and always looks crisp and clean, on its own or as a backdrop to patterns in bold black.



Field Tile - *Gloss*
Brilliant White
CODE A9000



Fusion - *Gloss*
Black on Brilliant White
CODE A9503

† Use this way up only for best effect



Tribute - *Satin*
Black Lustre on Daisy
CODE CDA9514



Concept - *Gloss*
Black on Brilliant White
CODE A9510



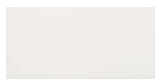
Sakura - *Gloss*
Black on Brilliant White
CODE A9508



Peony - *Gloss*
Black on Brilliant White
CODE A9511

† Use this way up only for best effect

Mouldings & Half Tiles



Half Tile - *Gloss*
Brilliant White
CODE A9002



Metro - *Gloss*
Brilliant White
CODE A9004



Sigma Moulding - *Gloss*
Brilliant White
CODE A9921



Omega Moulding - *Gloss*
Brilliant White
CODE A9909

Please note Peony patterns can be repeated in different ways: see pages xx



CDA9514 Tribute Black/Lustre on Daisy



A9506 Eternal Light Grey on Brilliant White.
Floor: Original Style Earthworks Andes Dawn



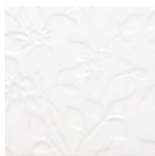
BRILLIANT WHITE



Gloss and satin finishes, subtle embossed patterns, and delicate pale grey designs make these whites the perfect choice for tasteful interiors.



Field Tile - *Satin*
Daisy
CODE CDA9000



Fusion - *Gloss*
Embossed Brilliant White
CODE A9504
† Use this way up only for best effect



Eternal - *Gloss*
Light Grey on Brilliant White
CODE A9506



Concept - *Gloss*
White on Brilliant White
CODE A9509



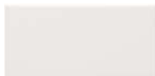
Paisley - *Gloss*
Grey on Brilliant White
CODE A9516



Element - *Gloss*
Brilliant White
CODE A9515

Please note Element pattern can be repeated in different ways: see page 18

Mouldings & Half Tiles



Half Tile - *Satin*
Daisy
CODE CDA9002



Eternal Half Tile - *Gloss*
Light Grey on Brilliant White
CODE A9507



Sigma Moulding - *Satin*
Daisy
CODE CDA9921



Omega Moulding - *Satin*
Daisy
CODE CDA9909

MELLOW WHITE



Elegant patterns in lustre on satin give these tiles a beautiful gleam and shimmer. Sakura represents a delicate Japanese cherry blossom, and Fusion is based on an anemone flower.



Filed Tile - *Satin*
Lily
CODE CLY9000



Peony - *Satin*
Lustre on Daisy
CODE CDA9511

Mouldings & Half Tiles



Half Tile - *Satin*
Lily
CODE CLY9002



Fusion - *Satin*
Lustre on Daisy
CODE CDA9503

† Use this way up only for best effect



Faberge Stripe - *Satin*
Lustre on Lily
CODE CLY9501



Sigma Moulding - *Satin*
Lily
CODE CLY9921



Omega Moulding - *Satin*
Lily
CODE CLY9909

Please note Peony patterns can be repeated in different ways: see pages xx



Sakura - *Satin*
Black/Lustre on Lily
CODE CLY9508

† Use this way up only for best effect



Sakura - *Satin*
Lustre on Daisy
CODE CDA9508

† Use this way up only for best effect



CLY9500 Faberge Lustre on Lily





MELLOW WHITE



Colonial is a soft and mellow off-white shade. Our Fabergé pattern is elegant and extravagant like the Russian Court which inspired this design.



Filed Tile - *Gloss*
Colonial White
CODE B9000



Fusion Embossed - *Gloss*
Colonial White
CODE B9504

† Use this way up only for best effect



Faberge Embossed - *Gloss*
Colonial White
CODE B9505



Faberge - *Satin*
Lustre on Lily
CODE CLY9500



Element - *Gloss*
Colonial White
CODE B9515

Please note by changing the direction of Fabergé different patterns can be achieved. Element pattern can also be repeated in different ways: see page 18

Mouldings & Half Tiles



Half Tile - *Gloss*
Colonial White
CODE B9902



Metro - *Gloss*
Colonial White
CODE B9004



Sigma Moulding - *Gloss*
Colonial White
CODE B9921



Omega Moulding - *Gloss*
Colonial White
CODE B9909

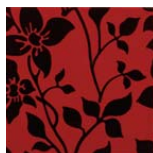
DRAMATIC RED



Bright red is guaranteed to give drama to an interior design – teamed with black it's a look that always gets attention. We've also added luxurious gold to the intricately designed paisley pattern for more than a touch of glamour.



Field Tile - Gloss
Red Passion
CODE GRP9000

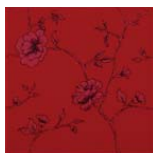


Fusion - Gloss
Black on Red Passion
CODE GRP9503

1 Use this way up only for best effect

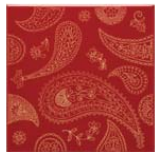


Peony - Gloss
Red on Jet Black
CODE N9511



Sakura - Gloss
Lustre on Red Passion
CODE GRP9508

1 Use this way up only for best effect



Paisley - Gloss
Gold on Red Passion
CODE GRP9518



Metro - Gloss
Red Passion
CODE CRS9000



Peony - Satin
Red on Poppy
CODE CRS9511

Please note Paisley and Peony patterns can be repeated in different ways: see pages xx

Mouldings & Half Tiles



Half Tile - Gloss
Red Passion
CODE GRP9002



Metro - Gloss
Red Passion
CODE GRP9004



Half Tile - Satin
Red Passion
CODE CRS9002



Sigma Moulding - Gloss
Red Passion
CODE GRP9921



Sigma Moulding - Satin
Poppy
CODE CRS9921



Omega Moulding - Gloss
Red Passion
CODE GRP9909



Omega Moulding - Satin
Poppy
CODE CRS9909







MIDNIGHT BLACK



CBS9503 Fusion Blue on Nightshade

Glorious, deepest black looks seriously stylish in gloss and satin finishes. Flashes of blue add interest and just a little mystery, like a starlit midnight sky.



Field Tile - *Gloss*
Jet Black
CODE N9000



Infinity - *Gloss*
Blue on Jet Black
CODE N9513



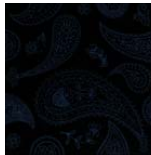
Faberge Stripe - *Gloss*
Blue on Jet Black
CODE N9502



Field Tile - *Satin*
Nightshade
CODE CBS9000



Fusion - *Satin*
Blue on Nightshade
CODE CBS9503



Paisley - *Gloss*
Blue on Jet Black
CODE N9516

Mouldings & Half Tiles



Half Tile - *Gloss*
Jet Black
CODE N9002



Half Tile - *Satin*
Nightshade
CODE CBS9002



Metro - *Gloss*
Jet Black
CODE N9004



Sigma Moulding - *Gloss*
Jet Black
CODE N9921



Sigma Moulding - *Satin*
Nightshade
CODE CBS9921



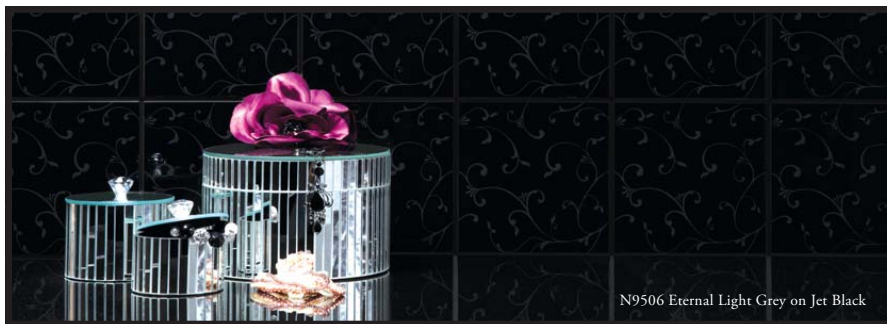
Omega Moulding - *Gloss*
Jet Black
CODE N9909



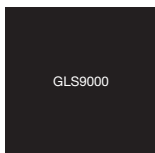
Omega Moulding - *Satin*
Nightshade
CODE CBS9909

Please note Paisley patterns can be repeated in different ways: see pages xx

MIDNIGHT BLACK



Shades of light grey, charcoal grey and sumptuous gold patterns really stand out next to Jet Black.



Field Tile - *Gloss*
London Stone
CODE GLS9000



Infinity - *Gloss*
Dark Grey on Jet Black
CODE N9512



Fusion - *Gloss*
Dark Grey on Jet Black
CODE N9503

† Use this way up only for best effect



Faberge Stripe - *Gloss*
Dark Grey on Jet Black
CODE N9501



Eternal - *Gloss*
Light Grey on Jet Black
CODE N9506



Faberge - *Gloss*
Dark Grey on Jet Black
CODE N9500



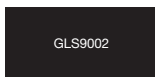
Faberge Embossed - *Gloss*
Jet Black
CODE N9505



Paisley - *Gloss*
Gold on Jet Black
CODE N9517

Please note by changing the direction of Fabergé different patterns can be achieved. Paisley and Peony patterns can also be repeated in different ways: see pages xx

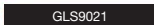
Mouldings & Half Tiles



Half Tile - *Gloss*
London Stone
CODE GLS9002



Eternal Half Tile - *Gloss*
Light Grey on Jet Black
CODE N9507

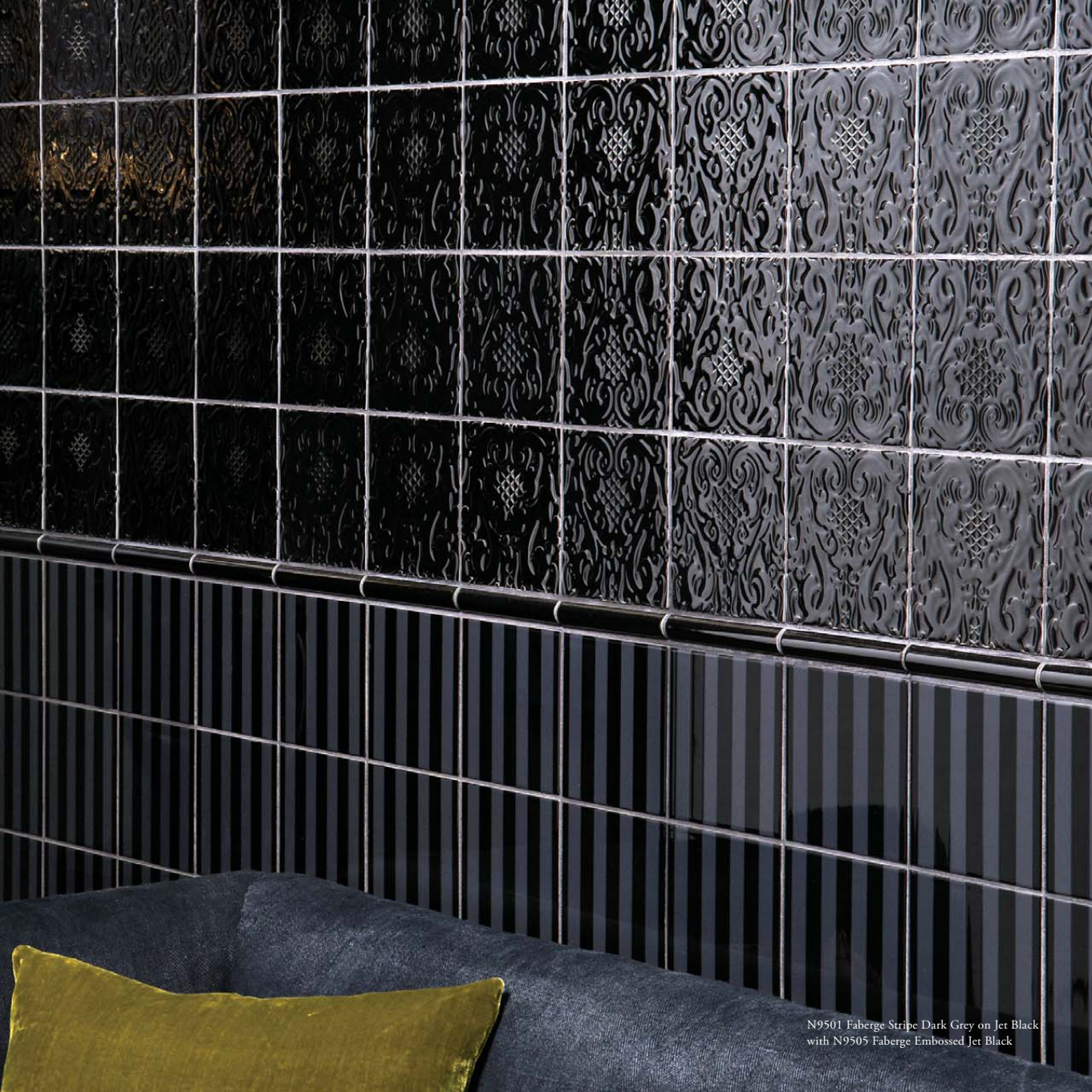


Sigma Moulding - *Gloss*
London Stone
CODE GLS9021



Omega Moulding - *Gloss*
London Stone
CODE GLS9009





N9501 Faberge Stripe Dark Grey on Jet Black
with N9505 Faberge Embossed Jet Black